

# MainRoads

## Sunshine Coast Multi-Modal Transport Corridor

July 2009

## Planning Update

### This update:

- » provides information about outcomes of community engagement activities in November 2008
- » advises how to find out more information about the MMTC
- » gives details on how to contact the project team.

### What is the MMTC?

The Sunshine Coast Multi-Modal Transport Corridor (MMTC) is a transport corridor from Caloundra Road to the Sunshine Motorway. The corridor will contain a high-speed arterial road and the CAMCOS rail line.

The Department of Transport and Main Roads is currently undertaking strategic planning for the corridor's ultimate alignment.

### Keeping you informed

The department is committed to keeping you informed about planning for the MMTC.

In November 2008, the department held public displays throughout the Sunshine Coast, providing the community with opportunities to view and comment on concept options for the MMTC. The displays presented the long-term strategic planning for the corridor.

The department would like to thank all community members and stakeholders who visited the displays or have taken part in the community engagement activities.



Existing Sunshine Motorway, looking north

Nearly 2700 people visited the displays at Lake Kawana Community Centre, the MMTC project office and local shopping centres.

Feedback received has been an important part of the strategic planning process and has helped the project team identify preferred options for some sections of the corridor. There are some issues that require further investigation and exploration of possible alternatives.

The feedback highlights that the community expects a sustainable transport solution for the Sunshine Coast with facilities which encourage an efficient public transport system and recognise the responsible treatment of the environment.

Some of the issues raised include:

- » alternatives for the major Mooloolah River crossing
- » fast and efficient access to the proposed Sunshine Coast University Hospital at Kawana
- » facilities for active transport such as bicycles, mobility scooters and pedestrians
- » environmental impacts to be minimised and managed.

The MMTC is a long-term strategic planning project and the options displayed in November 2008 and on the department's website represent the corridor's ultimate development. It allows for maximum traffic movements in the future. The construction

timeframes for the stages of the MMTC are yet to be determined.

The project team welcomes your feedback and will continue to meet with community members and key stakeholders as part of the MMTC's engagement program.

For more information, visit the project's virtual public display at [www.transportandmainroads.qld.gov.au](http://www.transportandmainroads.qld.gov.au) (search for "MMTC" and follow the link) or contact the project team on Freecall 1800 662 744.

### CoastConnect

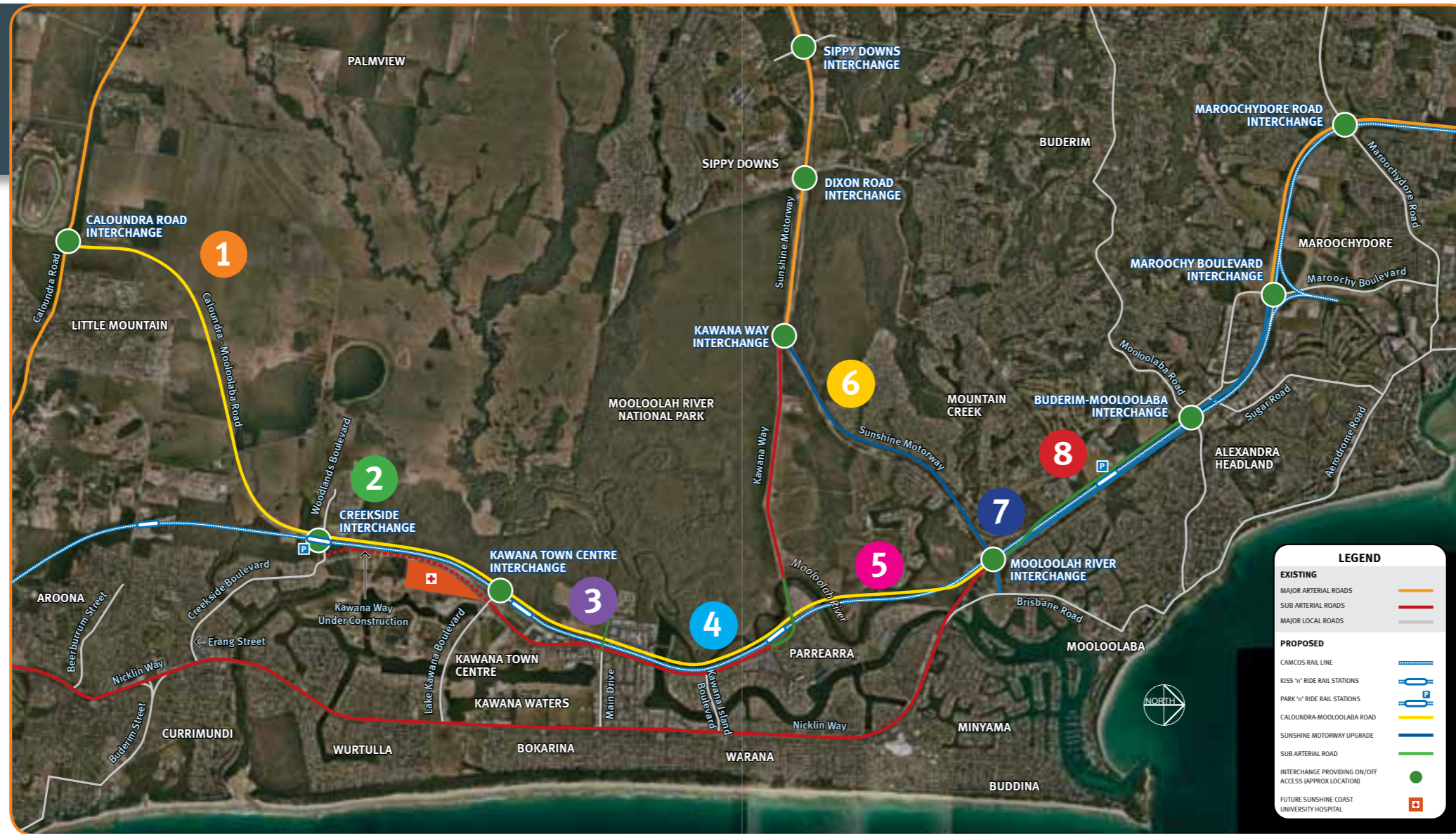
CoastConnect – Caloundra to Maroochydore is a Queensland Government initiative to improve public transport and sustainable travel options on the Sunshine Coast. The project is planning for a mixture of infrastructure improvements to suit different parts including new bus/transit and cycle lanes, upgrading major bus stations and stops and giving buses priority at key intersections. This project is designed to provide fast, frequent and reliable bus travel for residents and tourists making short, local trips in the Caloundra to Maroochydore corridor. In many ways, planning for CoastConnect – Caloundra to Maroochydore is linked to the extra capacity created on Nicklin Way through the MMTC project.

For more information, visit [www.transportandmainroads.qld.gov.au/coastconnect](http://www.transportandmainroads.qld.gov.au/coastconnect).

# Sunshine Coast MMTC strategic planning area

## 1 Caloundra Road to Creekside Boulevard

Construction of the southern section of Caloundra-Mooloolaba Road is now complete and opened to local traffic in April 2009. This new section of road is two lanes, with two-way traffic and connects to Woodlands Boulevard via a signalised intersection. Ultimately, it will connect to the MMTC's proposed Creekside Interchange.



## 2 Creekside Interchange

Feedback from the local community and environmental groups has resulted in a commitment by the department to investigate alternative options for the Park 'n' Ride facility at the proposed Creekside rail station. These alternatives will aim to reduce the impact on the natural vegetation by using more of the cleared area south of the proposed carpark. The proposed Park 'n' Ride layout will be available for comment when the CAMCOS rail station facilities are displayed publicly.



## 3 Creekside to Main Drive

Preferred options have been developed for the section between Creekside and Main Drive, including Kawana Town Centre Interchange. These options have now been adopted for detailed design purposes. The extension of Kawana Way, from Lake Kawana Boulevard to Creekside Boulevard, will provide an important link between the Kawana Town Centre and the southern section of Caloundra-Mooloolaba Road. It will also service the proposed Sunshine Coast University Hospital. This link is being constructed by private developer, Stockland.



## 4 Main Drive to Parrearra

The alignment for the section Main Drive to Wyuna Canal has been fixed by the constraining nature of the existing industrial and commercial area at Kawana Waters. The alignment for the section Wyuna Canal to Parrearra is constrained by the Mooloolah River and Kawana Way.



## 5 Parrearra to Mooloolah River Interchange

The CAMCOS alignment across the Mooloolah River was endorsed by the State Government in 2001. Community and key stakeholder feedback raised environmental, social, economic and constructability issues. The department will explore other solutions to address these issues. Further investigations will be required in this section.



## 6 Sunshine Motorway from Kawana Way Interchange to Mooloolah River Interchange

An ultimate alignment for six lanes in this section was displayed last year. The design for a staged upgrading of the existing two-lane Sunshine Motorway to four lanes is currently underway. The construction timeframe is yet to be determined.



## 7 Mooloolah River Interchange

Two options of this interchange have been developed. These options placed the CAMCOS rail line on either the eastern or western side of the motorway at the interchange. A general layout for the interchange has been adopted, but a preferred layout will not be selected until further consultation with adjacent property owners and other key stakeholders has been undertaken. See the back page of this Planning Update for more information about the Mooloolah River Interchange.



## 8 Mooloolah River Interchange to Buderim-Mooloolaba Interchange

Two alignment options between Mooloolah River Interchange and Buderim-Mooloolaba Interchange have been developed. One option places the CAMCOS rail line on the eastern side of the Sunshine Motorway, while the other shows the rail line on the western side. During public displays, there was a suggestion that the CAMCOS rail line could be placed between the two carriageways of the Sunshine Motorway. The department's investigations indicate this option would not be viable for a number of safety and access issues. Community concerns relating to noise and vibration are also being further investigated. More investigation and consultation will be required before a decision can be made on the preferred option for the rail alignment.



# MainRoads

## Connecting Queensland

### Planning for the future

The MMTC strategic planning process will result in solutions which represent the ultimate alignment for the corridor.

A significant feature of the planning is the Mooloolah River Interchange (MRI). The existing MRI is shown below.

Ultimately, the upgraded MRI plans to:

- » provide interconnection between the east-west and north-south sections of the Sunshine Motorway with the new Caloundra-Mooloolaba Road
- » improve connectivity between local roads

- » provide for all movements between the local road network and the Sunshine Motorway
- » accommodate the proposed CAMCOS rail line
- » accommodate the proposed Nicklin Way extension, which will connect to Mooloolaba Road and the proposed Mooloolaba rail station.

### MMTC planning timeframe

The department is on track to complete strategic planning in late 2009.



### To contact us

The Department of Transport and Main Roads values your feedback. You are welcome to provide input at any time.

Freecall: 1800 662 744

Email: [mmtc@skm.com.au](mailto:mmtc@skm.com.au)

Fax: (07) 3026 7575, Attention: MMTC Consultation

Write: MMTC Planning  
Reply Paid 3848  
SOUTH BRISBANE QLD 4101  
(no postage stamp required)

Visit: [www.transportandmainroads.qld.gov.au](http://www.transportandmainroads.qld.gov.au) (search for "MMTC")

To stay connected go to [www.transportandmainroads.qld.gov.au](http://www.transportandmainroads.qld.gov.au)